

Two Important Fine Points

1. On the first screen, look in the upper left hand corner. If you see nothing, that's a good sign! But...
 - If you see a tiny water faucet picture, that means water has been flowing all the time for the past 24 hours, which strongly suggests you have a leak.
 - If you see a tiny water faucet flashing on and off, that means water has flowed half the time or more for the past 24 hours. That suggests a very small leak or a cranky toilet.
2. Stopping wasteful leaks is a very good thing. But you'll have to decide if fixing a tiny leak is worth your expense and effort. If you'd like to discuss this with us, please do call. We also have a leaflet called "Might Have A Leak? What Now?!"



City of Bonney
Lake
Public Works
Water Department
253-447-4302

For billing questions, please contact Utilities Billing at 253-447-4318

How To Find And Check Your Water Meter



City Of Bonney Lake Public Works
Water Department



Meter Location (In The Ground)

253-447-4302 City of Bonney Lake Public Works, Water
Department

Getting At The Meter

Try lifting the lid of the meter box using your hands and a screwdriver or a similar tool. If the lid's on tight, it's okay to pull hard, but don't strain your back.

If you see nothing but dirt inside your meter box, there's no need to worry. It's normal. Probably, industrious moles have filled the box. Using your hands or a trowel, gently dig out some of the dirt. Take care not to break the glass on the meter dial.

To reach your meter, you shouldn't have to dig down more than a foot, usually much less. Your meter is about the size of a clenched fist and is mounted on pipes.

The mechanical workings inside your meter are made according to a decade's-old, simple design. They function like a tiny water wheel, and they spin a magnet.

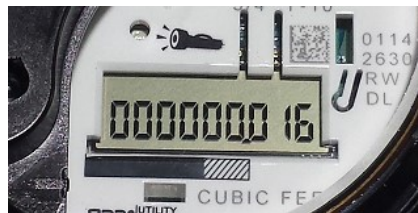
The meter dial is the part you can read. Its design is modern and digital. The dial counts pulses from the spinning magnet and translates that data into cubic feet.

Reading The Dial

If there's a plastic dial cover, flip it open. A tiny solar collector powers the dial. Once exposed to light, the dial should take about ten seconds to power up. It should display meaningless numbers while it does this. If nothing at all happens, it may need more light. Try shining a flashlight on it.

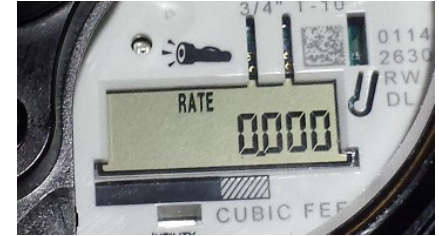
Once powered up, two screens will take turns appearing on the dial.

- The first screen will be completely full of numbers. It gives the amount of cubic feet of water the meter has measured since we installed it. (In this it's like the odometer on your car.) If you have water running on purpose, or if you have a leak, you'll see the numbers getting higher.



- We bill you for each hundred cubic feet (about 750 gallons) of water you use. Read the first four numerals from the left. For example 075306.372 would be read "0753."

- The second screen will be half full of numbers and will say "rate." This gives the water flow rate in cubic feet per minute. If you have water running, or a leak, you'll see something higher than zero on this screen.



- For example a RATE screen showing 0.020 would read .02 cubic feet per minute.
- Note: watch the flow-rate screen for half a minute, through several cycles of taking turns with the first screen. If the screen shows zeroes a few times and then shows a higher number, it suggests a very tiny leak. (This happens because meters only show water flows of a certain minimum size.)

You can call us with any questions!

City of Bonney Lake
Public Works
Water Department
253-447-4302