

Two Important Fine Points

1. On the front of the meter screen, look in the middle left hand side, you will see a triangle or star like dial, if it is not turning and all water is turned off in the house, that is a good sign! But...

- If you see it turning that means water is flowing through the meter, which strongly suggests you have a leak.
- If you see water around the meter box or in the meter box, that is a sign that the leak is close. If the leak indicator (triangle or star) is not turning please call the water division and the City will make the repairs. If the leak indicator dial is turning this could indicate a very small leak on your side of the service or a cranky toilet.

2. Stopping wasteful leaks is a very good thing. But you'll have to decide if fixing a tiny leak is worth your expense and effort. If you'd like to discuss this with us, please do call. We also have a pamphlet called

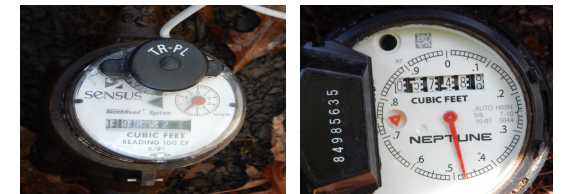


City of Bonney
Lake
Public Works
Water Division
253-447-4320

For billing questions, please contact Utilities Billing at 253-447-4317

How To Find And Check Your Touch Read or Manual Read Water Meter

City Of Bonney Lake Public Works
Water Division



Meter Location

Meters are located in a concrete or plastic box with either a metal, plastic or concrete lid. Usually located at the front corner of your lot. Your meter reader has marked your meter with either blue paint or a blue flag.

253-447-4320 City of Bonney Lake Public Works, Water
Division

Getting At The Meter

Try lifting the lid of the meter box using your hands and a screwdriver or a similar tool. If the lid's on tight, it's okay to pull hard, but don't strain your back.

If you see nothing but dirt inside your meter box, there's no need to worry. It's normal. Probably, industrious moles have filled the box. Using your hands or a trowel, gently dig out some of the dirt. Take care not to break the glass on the meter lens.

To reach your meter, you shouldn't have to dig down more than a foot, usually much less. Your meter is about the size of a clenched fist and is mounted on pipes.

The mechanical workings inside your meter are made according to a decade's-old, simple design. They function like a tiny water wheel, and they spin a magnet or gears.

The meter dial is the part you can read. It is designed to read the first four numbers. The dial counts pulses from the spinning magnet or gears and translates that data into cubic feet.

Reading The Dial

If there's a plastic or metallic dial cover with the meter ID Number on it, flip it open. You may have to clean the lens in order to see the dial (numbers.) On some of the models such as Neptune or Sensus models there will be a wire attached to the meter and the meter box lid. (Please be careful removing the lid as to not break or damage the wires.)

Types of Meters

These three meters are types of water meters that are in our system and you will have one of them. These meters will be changed out in the future to the new radio read meters. On all of the Cities water meters we only read the first four numbers left to right (3138) on the meter register. In example #1 on the meters there are leak indicators, an illustration (1.) Precision Meter: it will be the silver wheel; on illustration (2.) Sensus Meter: it will be the black triangle; and illustration (3.) Neptune Meter: will be the red triangle. If these are not moving that is a good thing, if it is turning continuously that indicates a leak. Note that they may move back and forth do to pressure fluctuations in the water system.

You can call us with any questions!

City of Bonney Lake

Public Works

Water Division

253-447-4320

1.



2.



3.

