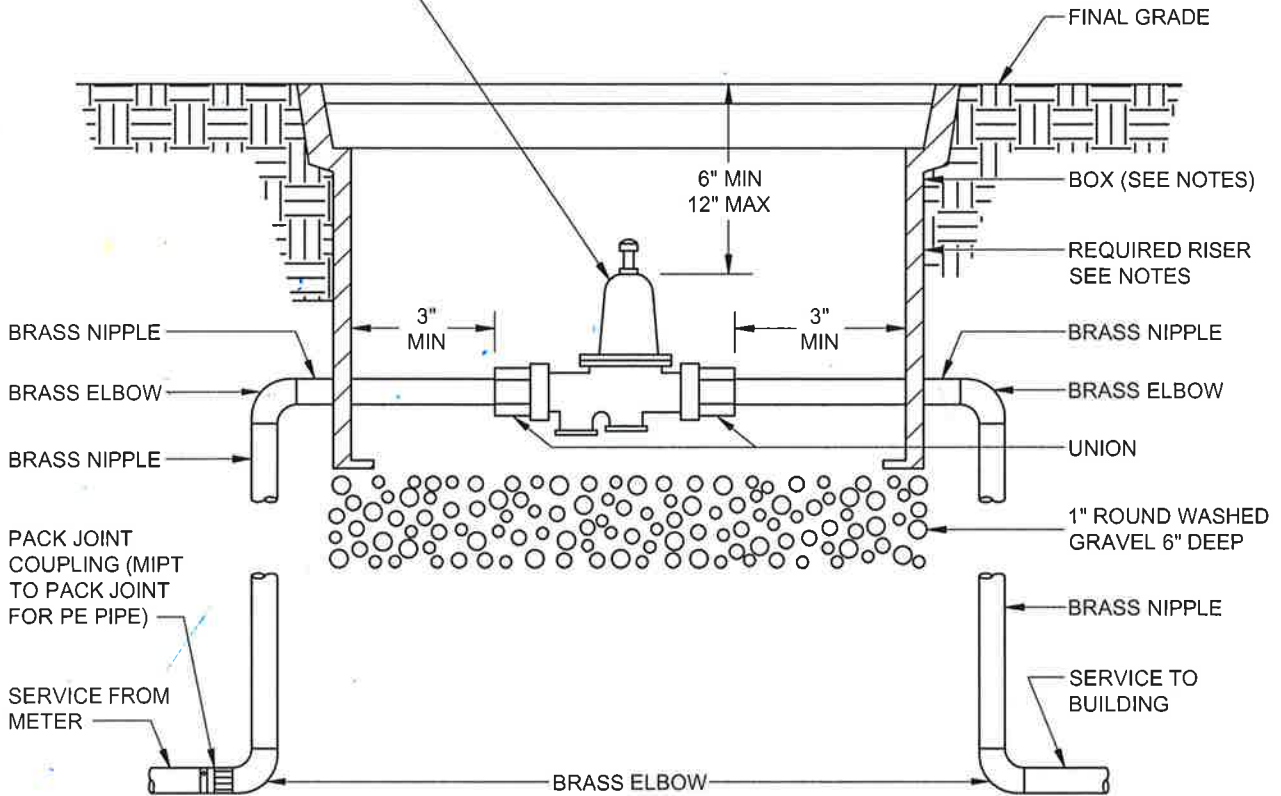


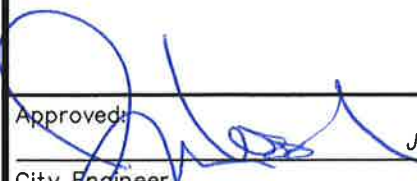
P.R.V. SHALL HAVE AN INTEGRAL BYPASS

PRESSURE REDUCING VALVE  
WILKINS 600 SERIES OR  
APPROVED EQUAL (WITH  
INTERNAL BYPASS AND STRAINER)



**NOTES:**

1. WHERE P.R.V. IS INSTALLED ON EXISTING SERVICE, CUT IN EXISTING SERVICE, INSTALL NEW BRASS FITTINGS REQUIRED TO MAKE A COMPLETE P.R.V. INSTALLATION.
2. BOX SHALL BE PER DETAIL W1.
3. REQUIRED RISER SHALL BE 6 INCH.
4. P.R.V. SIZE SHALL BE 1 INCH.

Approved:  June 17, 2015  
City Engineer Date  
**WATER STANDARD DETAIL**



Dwg No: **W23**  
**INDIVIDUAL PRV**