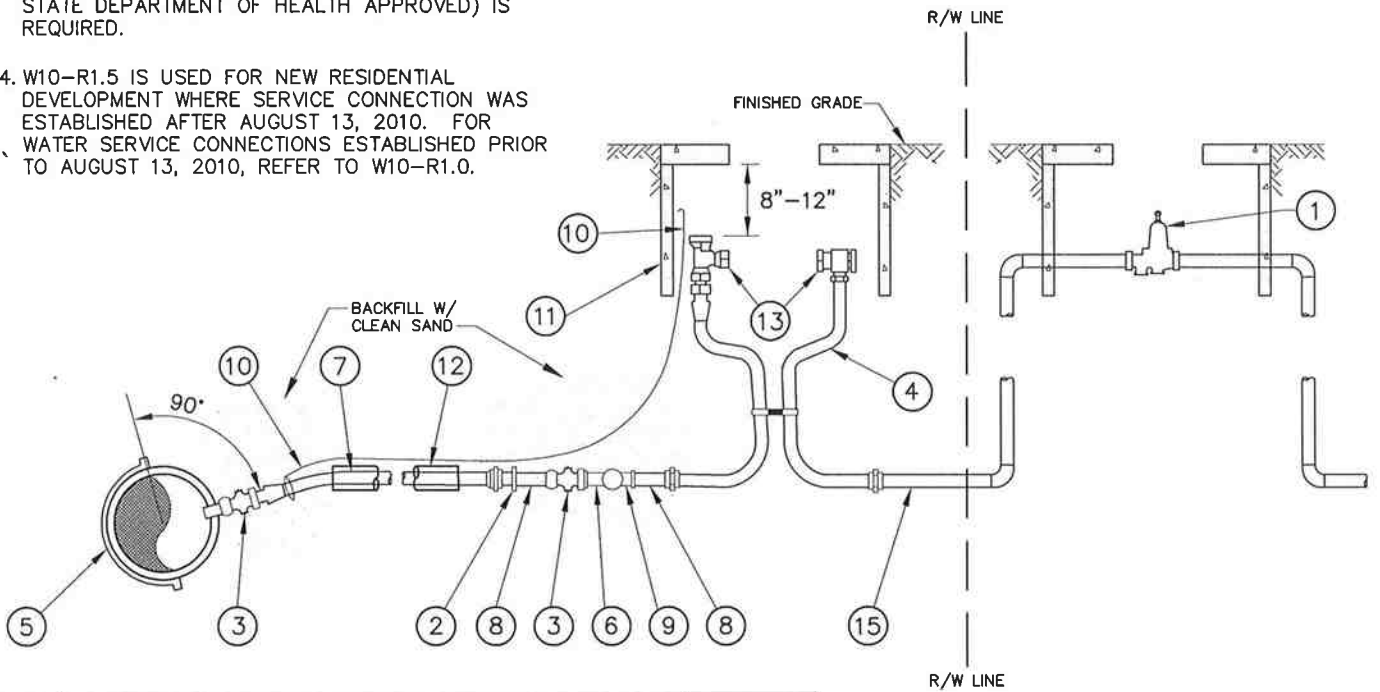


NOTES:

1. SET BOTTOM OF METER BOX AT TOP OF INLET AND OUTLET OF METER.
2. METERS SHALL BE OBTAINED FROM THE CITY OF BONNEY LAKE.
3. INDIVIDUAL PRESSURE REDUCING VALVE (WASHINGTON STATE DEPARTMENT OF HEALTH APPROVED) IS REQUIRED.
4. W10-R1.5 IS USED FOR NEW RESIDENTIAL DEVELOPMENT WHERE SERVICE CONNECTION WAS ESTABLISHED AFTER AUGUST 13, 2010. FOR WATER SERVICE CONNECTIONS ESTABLISHED PRIOR TO AUGUST 13, 2010, REFER TO W10-R1.0.



| | | |
|---------|--|----------|
| 2 | Created New Residential W10-R1.5 Detail | 12/07/10 |
| 1 | Added PRV Requirement & Additional Corp Stop | 11/05/09 |
| Rev No. | Revisions | Date |

Approved: *[Signature]* June 17, 2005
 City Engineer Date
WATER STANDARD DETAIL





Dwg No: **W10 - R1.5**
1" RESIDENTIAL WATER SERVICE

W10-R1.5 1" RESIDENTIAL WATER SERVICE

LEGEND

- ① INDIVIDUAL PRESSURE REDUCING VALVE – SEE DETAIL W23.
- ② 1½" MALE IRON PIPE x PACK JOINT ADAPTER EQUAL TO FORD C86-65.
- ③ 1½" MALE IRON PIPE x PACK JOINT CORP STOP EQUAL TO FORD F1101.
- ④ COPPER SETTER EQUAL TO VBH74-12W WITH FORD C86-44.
- ⑤ ROMAC SADDLE SINGLE STRAP FOR PIPE DIAMETERS LESS THAN 10" AND DOUBLE STRAP FOR PIPE DIAMETERS 10" AND GREATER.
- ⑥ 1½" X 1" X 1" BRASS TEE.
- ⑦ 1½" HIGH MOLECULAR (200 PSI) SDR7 POLYETHYLENE PIPE (LENGTH AS REQUIRED).
- ⑧ 1" BRASS NIPPLE (LENGTH AS REQUIRED) AS APPLICABLE.
- ⑨ 1" BRASS 90° ELBOW WITH BRASS NIPPLES.
- ⑩ 10 GAUGE WIRE FROM MAINLINE TAP TO METER BOX AND EXPOSE 6" MINIMUM IN BOX (RUN INSIDE 2" PVC GUARD CONDUIT WHERE APPLICABLE).
- ⑪ METER BOX – SEE DETAIL W1.
- ⑫ INSTALL SERVICE LINE IN 2" PVC SCHEDULE 40 SLEEVE WHEN CROSSING ROADWAY (6' MIN. BEYOND BACK OF CURB UNLESS OTHERWISE APPROVED BY THE CITY).
- ⑬ PROVIDE PVC PLUG AT INLET AND OUTLET OF SETTER.
- ⑭ PROVIDE APPROVED WATERTIGHT PLUG UNTIL CONNECTION TO PRIVATE SYSTEM OWNER WHERE APPLICABLE.
- ⑮ 1" BRASS NIPPLE OR 1" HIGH MOLECULAR (200 PSI) SDR7 POLYETHYLENE AS APPLICABLE DEPENDING ON LOCATION OF PRV.

| | | |
|--|--|---|
| 2 | Created New Residential W10-R1.5 Detail | 12/07/10 |
| 1 | Added PRV Requirement & Additional Corp Stop | 11/05/09 |
| Rev No. | Revisions | Date |
| Approved:  June 17, 2005 City Engineer Date | |  |
| WATER STANDARD DETAIL | | |

PAGE 2 OF 2

Dwg No: **W10 - R1.5**
1" RESIDENTIAL WATER SERVICE