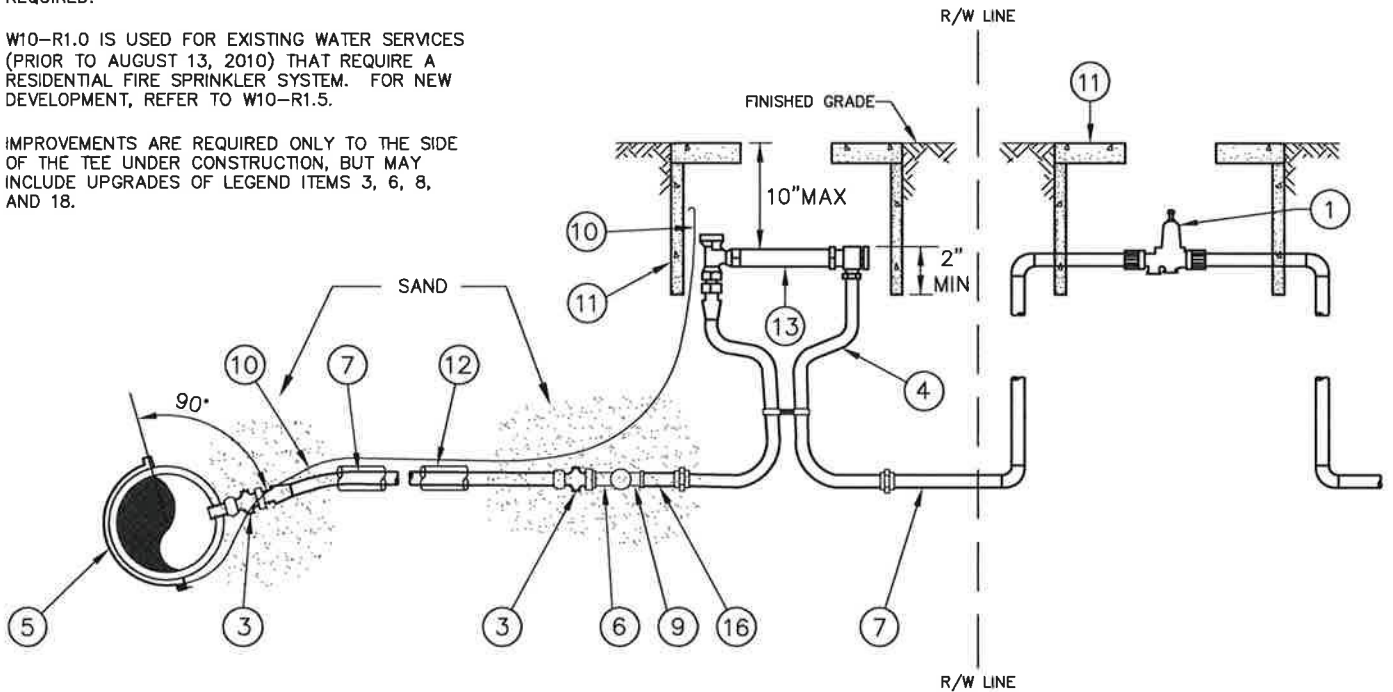



**NOTES:**

1. SURROUND SERVICE WITH 8" OF SAND PER 9-03.1(2) AND BACKFILL PER DETAIL W2
2. METERS SHALL BE INSTALLED BY THE CITY OF BONNEY LAKE.
3. INDIVIDUAL PRESSURE REDUCING VALVE (WASHINGTON STATE DEPARTMENT OF HEALTH APPROVED) IS REQUIRED.
4. W10-R1.0 IS USED FOR EXISTING WATER SERVICES (PRIOR TO AUGUST 13, 2010) THAT REQUIRE A RESIDENTIAL FIRE SPRINKLER SYSTEM. FOR NEW DEVELOPMENT, REFER TO W10-R1.5.
5. IMPROVEMENTS ARE REQUIRED ONLY TO THE SIDE OF THE TEE UNDER CONSTRUCTION, BUT MAY INCLUDE UPGRADES OF LEGEND ITEMS 3, 6, 8, AND 18.



Approved:  March 16, 2018  
 City Engineer Date



Dwg No: **W10 - R1.0**  
**1" RESIDENTIAL WATER SERVICE**

**WATER STANDARD DETAIL**

# W10-R1.0 1" RESIDENTIAL WATER SERVICE

## LEGEND

- ① INDIVIDUAL PRESSURE REDUCING VALVE – SEE DETAIL W23.
- ② NOT USED.
- ③ FORD F1101 (1" MALE IRON PIPE THREAD X PACK JOINT CORP STOP WITH STAINLESS STEEL STIFFENER).
- ④ COPPER SETTER WITH FIBER GASKETS SHALL BE VBH74-12W WITH FORD C86-44.
- ⑤ ROMAC SADDLE SINGLE STRAP FOR PIPE DIAMETERS LESS THAN 8" AND DOUBLE STRAP FOR PIPE DIAMETERS 8" AND GREATER.
- ⑥ 1" X 1" X 1" BRASS TEE.
- ⑦ 1" HIGH MOLECULAR (200 PSI) SIDR7 POLYETHYLENE PIPE (LENGTH AS REQUIRED).
- ⑧ 1" BRASS NIPPLE (12" LENGTH).
- ⑨ 1" BRASS 90° ELBOW WITH BRASS NIPPLES.
- ⑩ 10 GAUGE INSULATED SOLID CORE COPPER TRACER WIRE. STRIP 12" AND WRAP AROUND SADDLE ASSEMBLY BOLT. STRIP 6" MINIMUM INSIDE BOX (RUN INSIDE 2" PVC SLEEVE WHERE APPLICABLE).
- ⑪ METER BOX – SEE DETAIL W1.
- ⑫ INSTALL SERVICE LINE IN 2" PVC SCHEDULE 40 SLEEVE WHEN CROSSING ROADWAY (6' MIN. BEYOND BACK OF CURB UNLESS OTHERWISE APPROVED BY THE CITY). CLEARANCE BETWEEN SLEEVE AND BALL VALVE SHALL BE 2' MINIMUM.
- ⑬ 1" BRASS NIPPLE.
- ⑭ PROVIDE APPROVED WATERTIGHT PLUG UNTIL CONNECTION TO PRIVATE SYSTEM OWNER WHERE APPLICABLE.
- ⑮ NOT USED.
- ⑯ 1" BRASS NIPPLE (6" LENGTH).
- ⑰ NOT USED.
- ⑱ 1" X 3/4" BRASS BUSHING.

Approved:  March 16, 2018  
City Engineer Date  
**WATER STANDARD DETAIL**



Dwg No: **W10 - R1.0**  
**1" RESIDENTIAL  
WATER SERVICE**