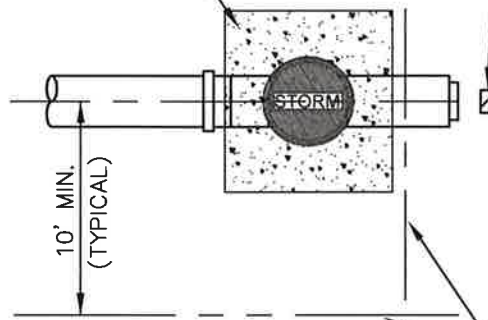


CONCRETE PAD (24"X24"X8")
OR CAST IN PAVEMENT AS
DIRECTED BY THE CITY

2" X 4" TREATED
SERVICE MARKER

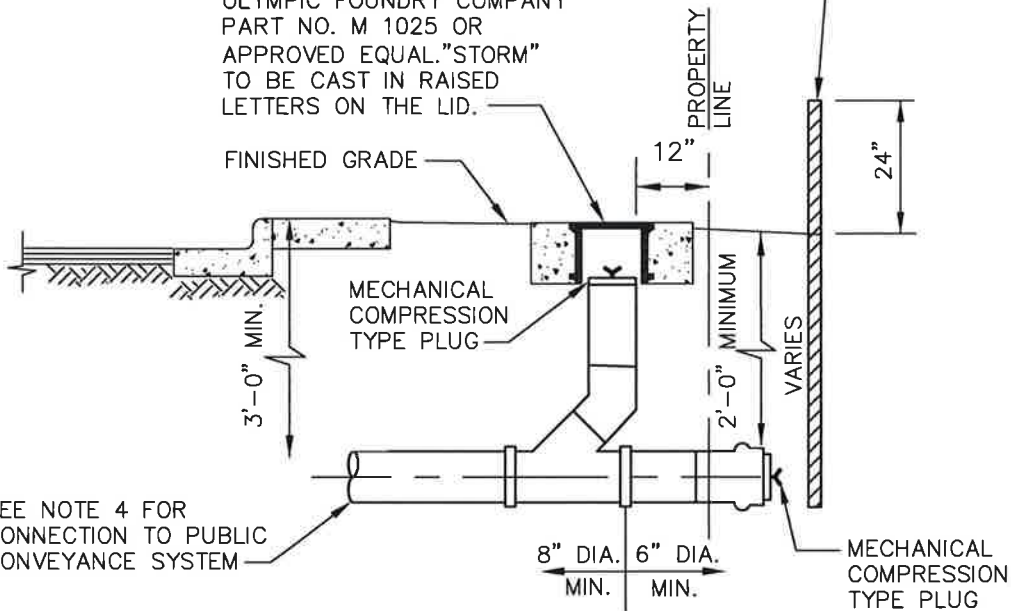


PLAN

PROPERTY
LINE

CAST IRON RING & COVER,
OLYMPIC FOUNDRY COMPANY
PART NO. M 1025 OR
APPROVED EQUAL. "STORM"
TO BE CAST IN RAISED
LETTERS ON THE LID.

2" X 4" TREATED
SERVICE MARKER



ELEVATION

NOTES:

1. MAXIMUM DEFLECTION NOT TO EXCEED PIPE MANUFACTURER RECOMMENDATIONS.
2. PIPE MATERIAL SHALL BE PVC SDR 35, OR APPROVED EQUAL (WHITE IN COLOR).
3. PIPE TO BE BEDDED IN PEA GRAVEL.
4. CONNECTIONS TO THE PUBLIC STORM DRAIN SYSTEM SHALL ONLY BE MADE AT STRUCTURES AS APPROVED BY THE CITY ENGINEER.
5. PAINT PORTION OF SERVICE MARKER THAT IS ABOVE FINISHED GRADE WITH WHITE PAINT. STENCIL WITH BLACK LETTERS "STORM" AND THE DEPTH TO THE IE OF THE STUB USING 3" HIGH LETTERS. LOCATE SERVICE MARKER AT END OF EACH SERVICE.
6. MINIMUM PIPE SLOPE IS 1.0% FOR 6" DIA. PIPE AND 0.5% FOR 8" AND LARGER DIA. PIPE.

Approved:  March 16, 2018
City Engineer Date
STORM DRAIN STANDARD DETAIL



Dwg No: **SD9**
**ROOF DRAIN COLLECTION
SYSTEM CONNECTION**