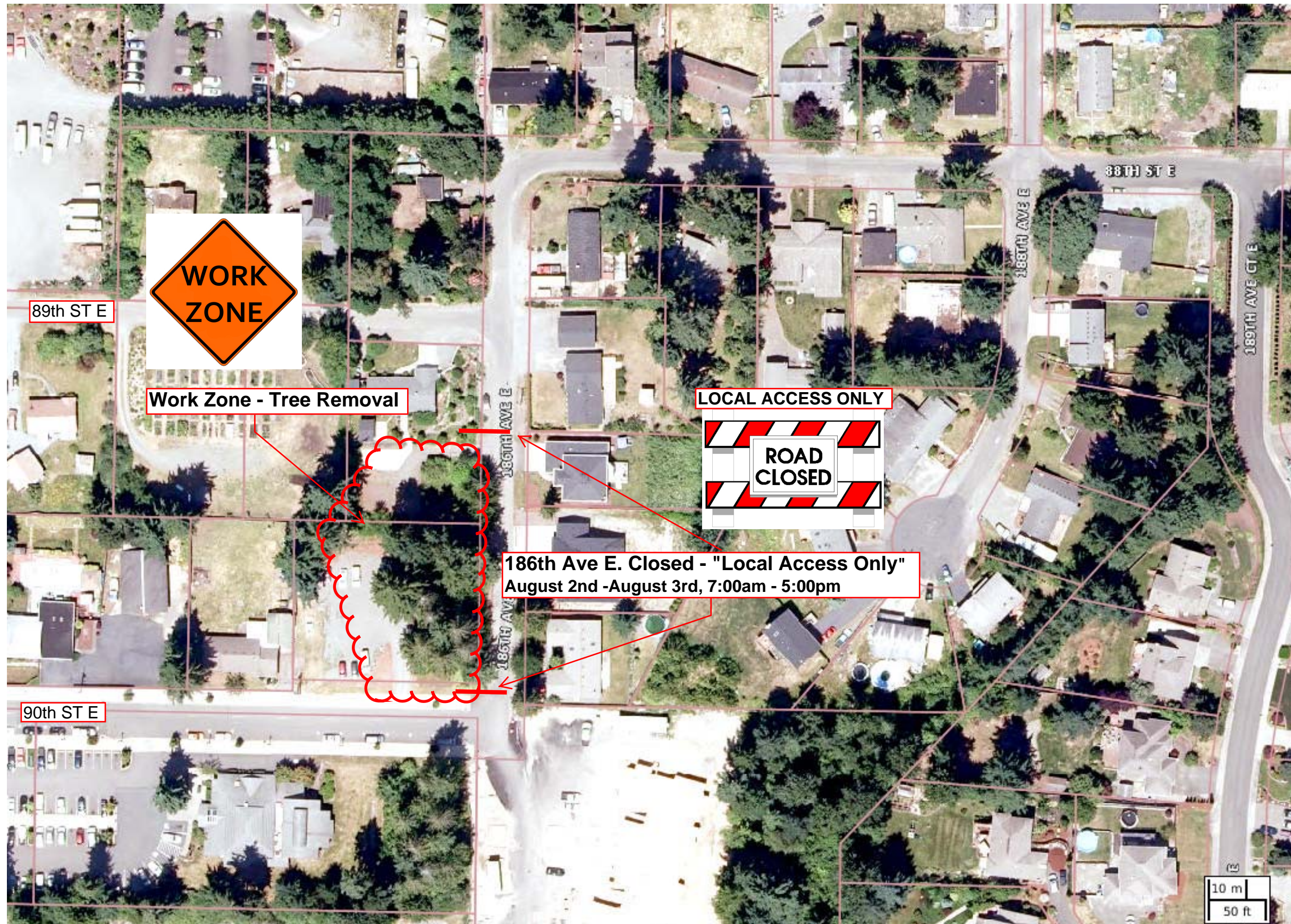


186th Street Improvements - Tuesday, July 26, 2016



- Legend**
- Tax Parcels
 - URBAN GROWTH BOUNDARY AREA
 - Urban Growth Boundary Area - Official
 - Urban Growth Boundary Area - Proposed

Disclaimer: The map features are approximate and are intended only to provide an indication of said feature. Additional areas that have not been mapped may be present. This is not a survey. The County assumes no liability for variations ascertained by actual survey. **ALL DATA IS EXPRESSLY PROVIDED 'AS IS' AND 'WITH ALL FAULTS'**. The County makes no warranty of fitness for a particular purpose.